

The Connectome Editor

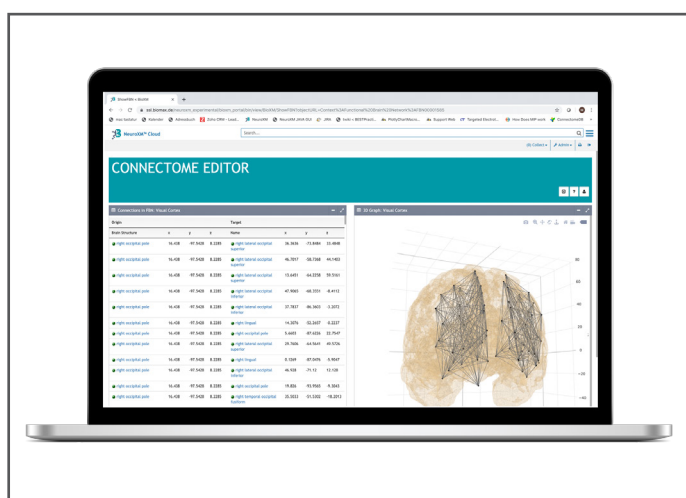
The NeuroXM™ Connectome Editor helps you explore, analyze and compare connectivity of selected anatomical or functional subnetworks.

Subnetworks can be defined on the basis of individual ROIs or by the use of anatomical or functional brain ontologies.

And with just a few point and click operations you will be able to add intraarea, interarea and contralateral connections.

> Templates can be used in the following NeuroXM™ components for filtering connections:

- NeuroXM™ Connectome Browser
- NeuroXM™ Connectome Analyzer
- NeuroXM™ Connectome Comparator
- NeuroXM™ Connectome Integrator



The NeuroXM™ Connectome Editor

Required Input

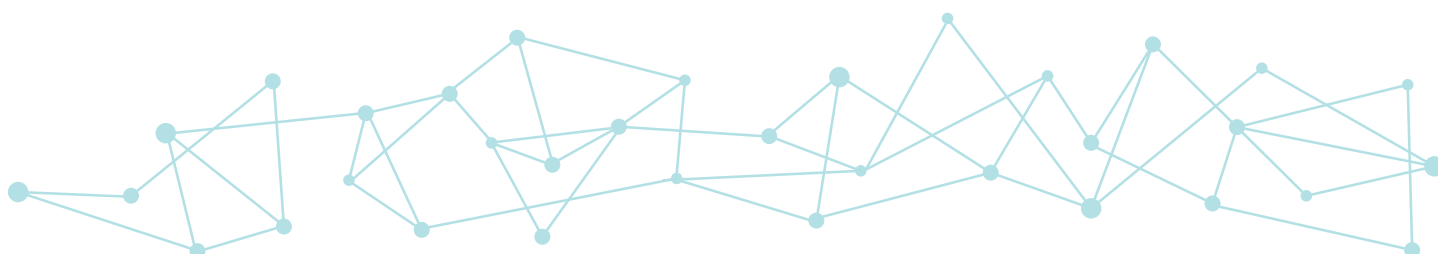
> Connectomes in one of the afore mentioned NeuroXM™ components, e.g., the NeuroXM™ Connectome Browser

Generated Output

- > A template for a subnetwork retrieving all selected connections irrespective of their strengths.
- > A tabular report containing all selected connections, e.g., of an individual subject irrespective of connection strengths.
- > A graphical representation as interactive 3D lattice graph.

Integrated Components

- > Editor to define subnetworks and to store them as templates
- > Export functionality to .xlsx and .csv files



The NeuroXM™ Cloud

The NeuroXM™ Cloud, consisting of the Connectome and the Transcriptome Clouds, is a novel and unique solution for everyone working with brain data. With it, dealing with multimodal brain data becomes easy and straightforward; it reveals new insights into the brain as never before.

The NeuroXM™ Cloud provides our customers with various software modules for building up, browsing, comparing, analyzing and editing large data volumes.

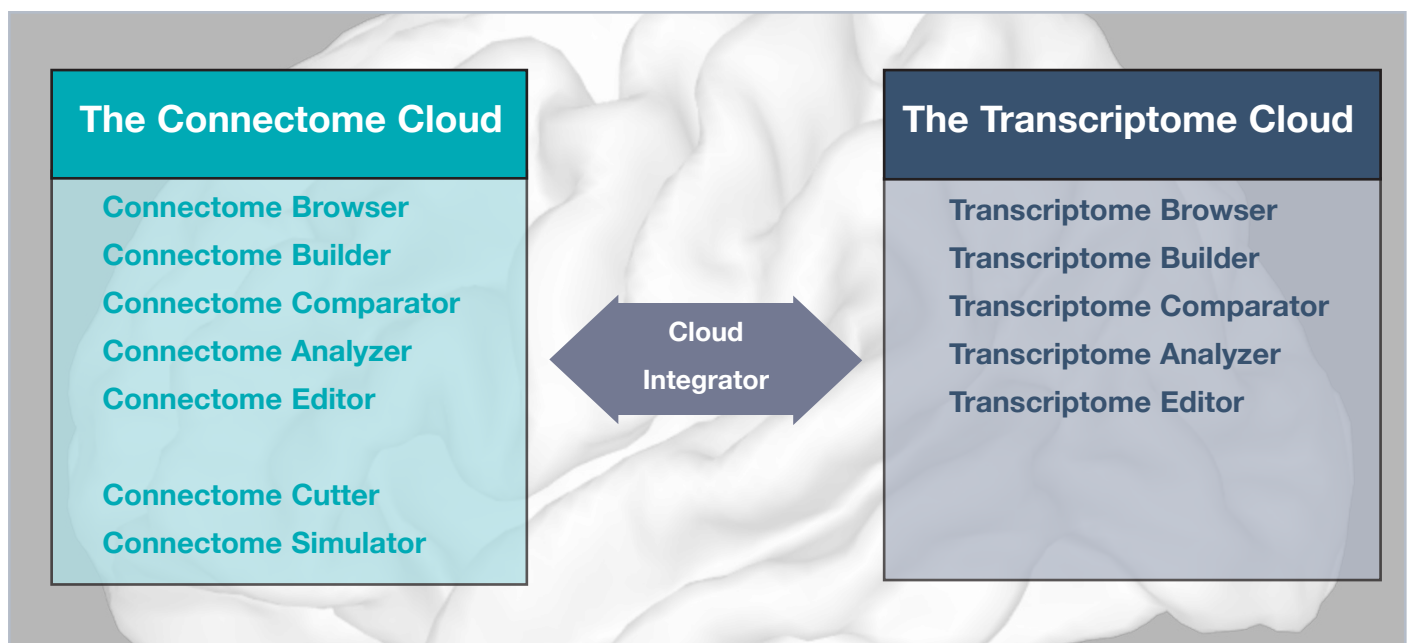
Via the NeuroXM™ Cloud Integrator data from both clouds can be exchanged and combined.

The basis modules for the NeuroXM™ Connectome and Transcriptome Clouds are the Connectome Browser and the Transcriptome Browser.

These basis modules can be licensed alone or in combination with any other software module of the respective cloud.

The Cloud Integrator can only be licensed with the basis modules of both clouds together.

Get in touch with Biomax to receive your individual offer for an attractive bundle including one or two basis modules and additional components.



The NeuroXM™ Cloud from Biomax



Biomax Informatics AG
Robert-Koch-Str. 2
82152 Planegg, Germany
info@biomax.com

Call:
+49 89 895574-0 (DE)
+44 7832 965 326 (UK)
+ 1 608 636 2222 (US)

www.biomax.com