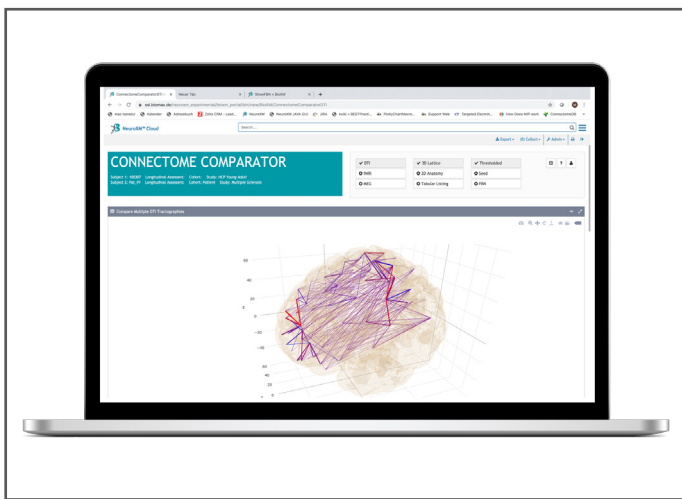


## The Connectome Comparator

By using the Connectome Comparator you are able to compare full brain connectomes from two subjects, or from an individual subject with a group average, or the average connectomes of two cohorts. Longitudinal comparisons of the connectome of an individual subject are possible, too.

The Connectome Comparator is applicable for any available imaging modality.



*Differences in Connection Strengths*

## Integrated Components

- > Viewers for differences in connectivity of each connectivity. Visualization of anatomical landmarks from structural MRI
- > Catalogue of available public and proprietary datasets
- > Statistical comparisons to matched controls

## Required Input

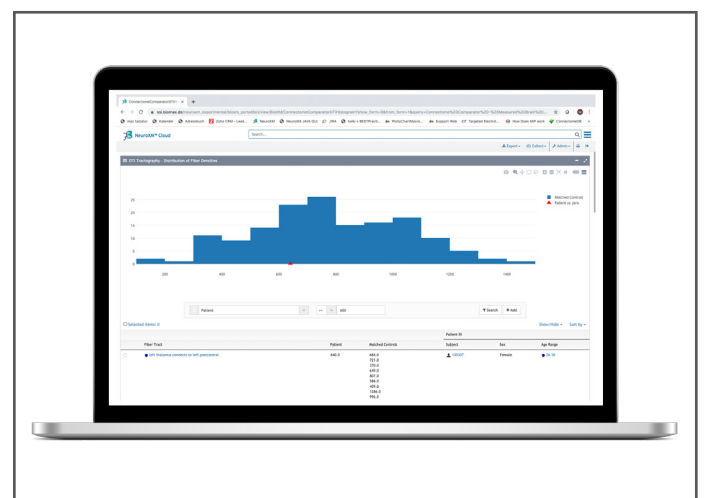
- > Use your own datasets in the NeuroXM™ Connectome Cloud and compare them to

public datasets from the Human Connectome Project, UK Biobank or ADNI, etc.

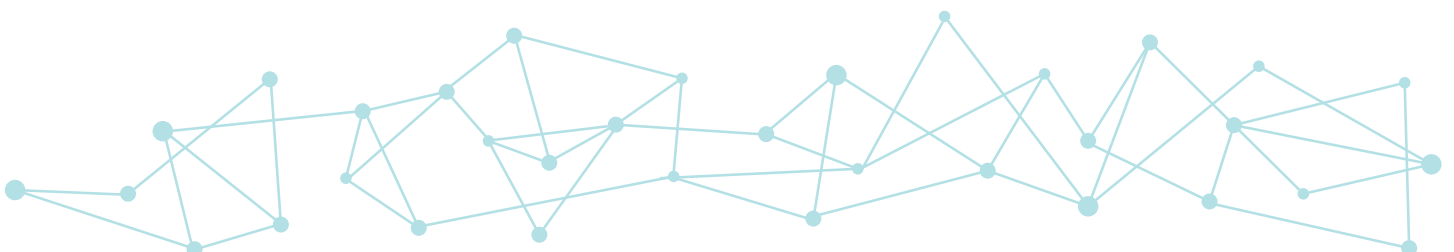
- > Compare connection strengths from individual subjects with matched controls.
- > Manifold search and filter functionality.
- > Export functionality to .xlsx and .csv files
- > Storing figures as .png files

## Generated Output

- > Tabular reports of differential connectivity analysis, absolute differences, relative differences, loss and gain of individual connections
- > Interactive 3D lattice plots of brain connectivity and differential connectivity
- > Histograms of fiber density distributions



*Histogram of fiber density distribution*



## The NeuroXM™ Cloud

The NeuroXM™ Cloud, consisting of the Connectome and the Transcriptome Clouds, is a novel and unique solution for everyone working with brain data. With it, dealing with multimodal brain data becomes easy and straightforward; it reveals new insights into the brain as never before.

The NeuroXM™ Cloud provides our customers with various software modules for building up, browsing, comparing, analyzing and editing large data volumes.

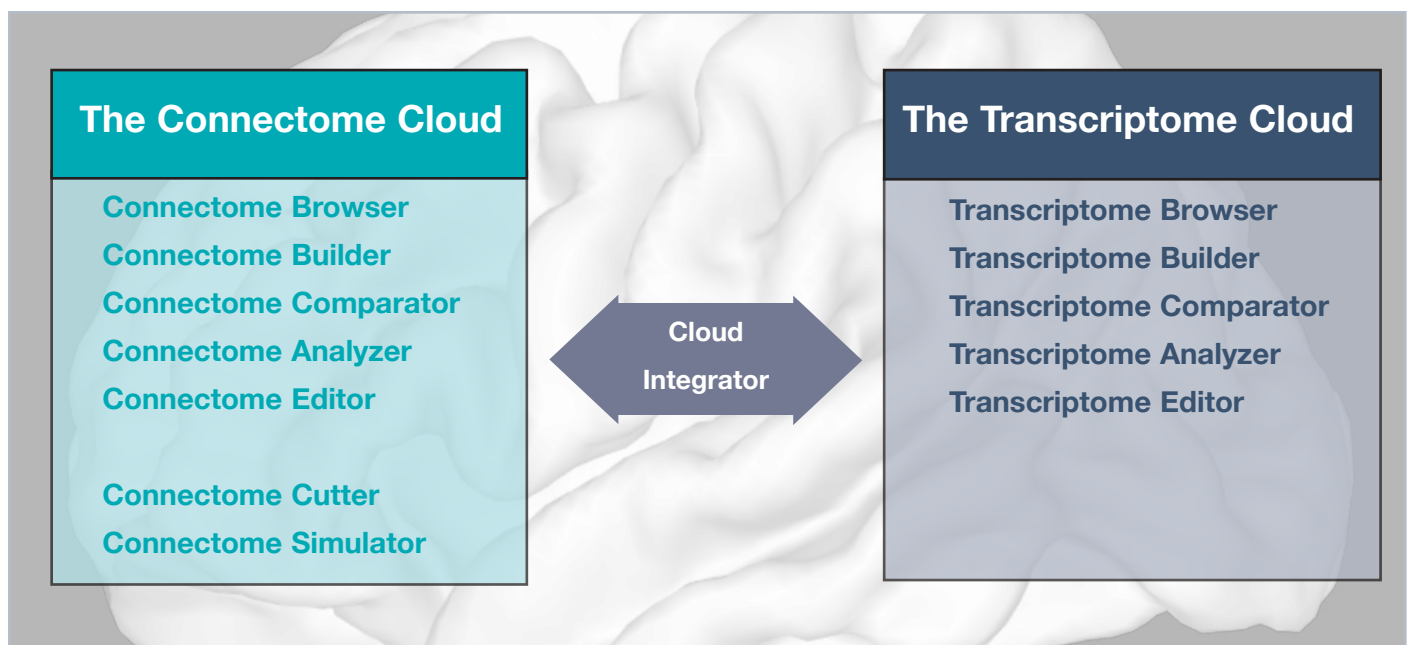
Via the NeuroXM™ Cloud Integrator data from both clouds can be exchanged and combined.

The basis modules for the NeuroXM™ Connectome and Transcriptome Clouds are the Connectome Browser and the Transcriptome Browser.

These basis modules can be licensed alone or in combination with any other software module of the respective cloud.

The Cloud Integrator can only be licensed with the basis modules of both clouds together.

Get in touch with Biomax to receive your individual offer for an attractive bundle including one or two basis modules and additional components.



*The NeuroXM™ Cloud from Biomax*



Biomax Informatics AG  
Robert-Koch-Str. 2  
82152 Planegg, Germany  
info@biomax.com

Call:  
+49 89 895574-0 (DE)  
+44 7832 965 326 (UK)  
+ 1 608 636 2222 (US)

[www.biomax.com](http://www.biomax.com)